



The Greater Milwaukee Wings

GWRRA WI-"G" Region E



May 2007

<http://www.gwrra-wig.org>

Page 1 of 3

From the Chapter Director

We closed the month of April with a very successful Safety Fair at Action Power Sports. I would like to thank Russ Bethe for giving an excellent presentation of the Co-Rider Course and a brief synopsis of the elements of proper group riding. The presentation and following question and answer period were both thought provoking and enlightening. I would also like to thank Joe Sigler of Action Power Sports for donating the use of space at his dealership, for donating many raffle prizes, and for his ongoing support of our annual Spring Safety Fair. Joe has already volunteered his services for next year's fair.

Chapter G will be presenting the GWRRA Road Captain Course on two dates this year. We have the first class scheduled for Saturday, May 12th, at Root River Center beginning at 11:00AM. The second class is scheduled for Thursday, August 9th, at Root River Center beginning at 7:00PM. We purposely scheduled the first for a weekend and the second for a weeknight to enable everyone to attend, regardless of their work schedules.

The course, taught by Russ Bethe, consists of a classroom presentation followed by a short ride in which attendees will be able to show their proficiency in the lessons learned. The courses are free and co-riders are encouraged to attend. If most of your group riding is done with a co-rider, this makes it even more crucial for the co-rider to attend. Learning, understanding, and practicing the fundamentals of GWRRA group riding promotes a safer riding environment for you, your co-rider, and the entire group much the same as the "Rules of the Road" provides a safety standard expected and required of all motorists.

There is a limit to how many students each instructor can handle at one time. If you will be taking either of these courses it is imperative that you register with our Educators, Gene and Pam Lingford, at 414-483-4119 as early as possible so that enough instructors will be available. There is beauty to behold when observing a group of motorcyclists perform coordinated maneuvers in a harmonious manner. The added benefit of greater safety makes this a course not to be missed!

Ride Safe!

Bob & Ginny Schattschneider
Chapter Directors

Staff

Chapter G Director

Bob & Ginny
Schattschneider
414-764-6077
r.w.schatzie@netzero.net

Asst. Chapter Director

Tom & Kenlee Ballmann
920-452-4779
tomballman@sbcglobal.net

Chapter Educator

Gene & Pam Lingford
414-483-4119
pmitzie@sbcglobal.net

Treasurer

Lynn Borkehagen
414-525-9074
floodman1@wi.rr.com

Secretary

John Hickman
414-964-1159
hickman@wi.rr.com

MED Team

Marcia Miller
414-840-4204
marciamiller@wi.rr.com
Pat Olson
262-502-0059
ssas@execpc.com

MAD

Rich & Sharon Winkler
414-482-0199
swinkler@wi.rr.com

Historian

Terry & Anna Werth
262-971-0155
wingnuts2k@wi.rr.com

Ride Coordinators

Bob & Diana Gorecki
414-761-1779
robertgorecki@wi.rr.com

Webmaster

Greg Miller
414-840-4203
gregmiller@wi.rr.com

Newsletter Editor

Rande Plemons
262-971-6704
randeplemons@yahoo.com

Sunshine/Goodie Sales

Ernie Olson
262-502-0059
ssas@execpc.com

2007 Couple of the Year

Art & Pat Kuenstler
414-744-5499

Mark Your Calendars:

Road Captain's Course; May 12th.
Schwartz Dinner Ride & Campfire; May 19th.
Chapter G Social; May 20th.

Calendar of Events

Chapter G Monthly Social 4:30pm

February 25 * March 25 * April 22 * May 20 * June 24 * July 29
August 26 * September 30 * October 21 * November 25 * December 16

Root River Center, 7220 W Rawson Ave

If you would like to dine during the meeting, come early to place your food order.

Jun. 2: **Berres Coffee House & Restaurant Johnson Creek**

More details to follow. Contact Art Kunstler at 414-744-5499.

Jun. 2: **Volunteer Coordinator needed for MACC Fund Trek 100**

Volunteer needed to assist with this bicycle ride. Contact Bob Schattschneider at 414-764-6077.

Jun. 23-24: **District Rally Green Bay**

Information on the District Webpage:
<http://www.gwrra-wi.org>. Contact Mike Hultine at 920-261-7101 for more information.

Jul. 1: **Fox & Hounds Reprieve Lunch, 10am**

More details to follow. Contact John Hickman at (414) 964-1159 for more information.

Aug. 4-5: **Volunteer for MS 150 Bike Tour**

The Chapter usually patrols the course and assists the cyclists as needed. Volunteers can stay in the dorms at UW Whitewater for free; however the Chapter has rooms reserved at the AmeriHost Inn in Whitewater. Contact Bob Schattschneider at 414-764-6077.

Aug. 19: **Jelly Belly Tour**

More details to follow. Contact Art Kunstler at 414-744-5499.

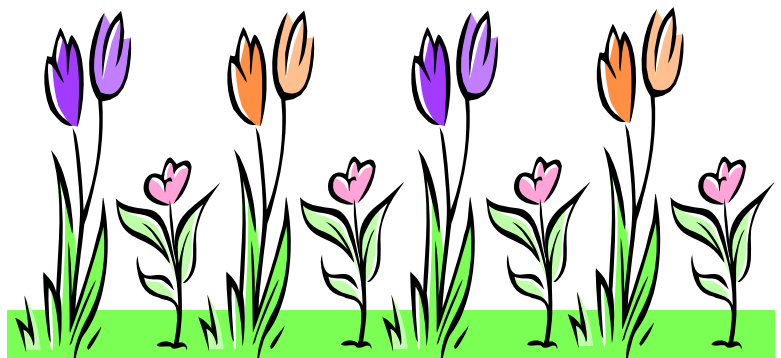
Oct. 20: **Chili Dump, 2pm**

More details to follow. Contact Art Kuenstler at (414) 744-5499 for sign-up and more information.

Happy Mother's Day
to all of those deserving
women out there!



In between rides, plant
something you'll enjoy for the
rest of the season



Look Where We've Been...

Pound Auction

The "POUND AUCTION" was a huge success. There were some unusual POUND items from a # of baked beans, a # of candy, a # of marshmallows, a # of pennies, a # of flower seeds, a # cake and many more items to numerous to mention. We also noticed a camaraderie between bidders who were pooling their "fun money" to get that special package.....

Our thanks to our friend and auctioneer for the evening, Tom Dohoney, for helping make this a fun activity. Thanks to all who participated. We hope you enjoyed it as much as we did.

- Art & Pat Kuentler



"No, no, don't print this... Ginny doesn't know that I'm here!"

Longnecks



"Don't even think about touching my Martini, buddy!!"



"Listen Darlin', you're testing my patience with that camera...now, you have a nice day, ya hear!"



"Uh, hey guys, are we having fun yet?"

Look What's Coming Up...

2007 Chapter G Circle Tour

As has been the case in past years, the 2007 Chapter G circle tour will have a theme. This year's theme is "The Colors of Wisconsin". Wisconsin has many towns with colors contained in their name. We have chosen a few and put them together to form a circle tour. Actually, this year a little twist has been added to the tour. It contains two "loops". There is a loop that contains towns which are west of Milwaukee and is called (surprise, surprise) the Western Loop. There is also an Eastern Loop which is made up of towns north of Milwaukee. (We'd get a little damp riding to towns east of Milwaukee.) Each loop was set up to be approximately 300 miles long, so it may be ridden comfortably in a single day. Riders have their choice of riding the Eastern Loop, the Western Loop, or both loops. Information regarding entry fees, rules, and the list of towns on the tour is located in the Chapter G web site. Information can also be obtained at our monthly socials, or by contacting *Rich or Sharon Winkler at swinkler@wi.rr.com*.

Sound Advice...

Cold Weather Starting

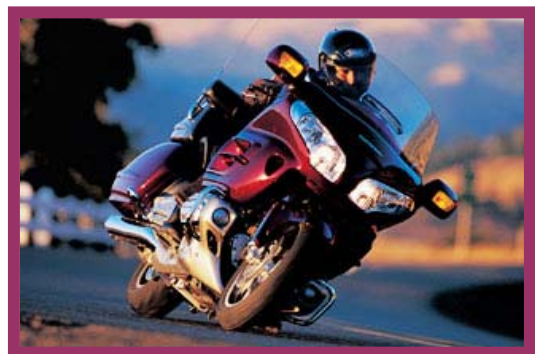
For those that have been riding more than a year it probably is not news, so consider it just a reminder.

Regardless of whether or not you have an indicator that says your bike is in neutral, ALWAYS hold your clutch all the way in when starting the bike.

Next, and this one can save you pain and damage to the bike: ALWAYS hold your front brake (HARD) before dropping the bike into gear – even when your clutch is being held all the way in.

Because you have a wet clutch, cold weather causes your oil to thicken and your clutch/flywheel tend to stick together after sitting with the engine off. Because of this, merely holding the clutch lever fully engaged is no assurance that when you drop into gear the bike will not jump forward unless you are firmly braked.

*Life's just more exciting
when viewed from a
HONDA*



What a motley, but fun, crew!